



ILLINOIS VALLEY WHEELMEN

P.O. Box 1523 · Peoria, Illinois

Pres.: Ron Matuska 688-2488

Treas.: Joe Mugavero 685-6608

V. Pres.: Mark Siegal 688-8866

Program: John Wellwood . 685-9348

Secy.: Joanne Fought 676-6849

Editor: Steve Meisner 692-9724

June 1981

NEXT MEETING: Wednesday June 24, 1981, 7:30 p.m. 6815 N. Sheridan Road, Peoria
The program will be a slide narration by Phyllis Harmon on her recent bicycle tour of New Zealand. The tour was a feature article for the "American Cyclist". Phyllis is a honorary director of the League of American Wheelmen.

The July 22th meeting will be at Jubilee College.

PRESIDENT'S NOTES: Summer took a long, wet time getting here, but from all the sunburn's I've seen it has arrived. Now I suppose we'll all be looking forward to the cooler weather of fall.*** I'm very grateful to the many IVW members who have contributed to Steamboat Days - Tour of the Illinois River Valley. Dodie Mugavero designed one of the best flyers anyone has ever done, Marilyn Gottwald co-ordinated registration, Bob Jones & Rich Miller came up with some super routes, Dave Paddock made our maps, Les Siegrist, Dave Wenzel, John Wellwood, Bob Jones, & Rich Miller marked the routes. Also thanks to Steve Chance for his map, everyone at registration, sag volunteers, Joe Mugavero for handling the money, and anyone else I may have missed.*** TOIRV is meant to be more than just another ride. Too many 'tours' are not really that. The object is often just to get it done. The routes for TOIRV were designed taking into consideration that bicyclists come in all sizes, shapes, abilities, and aspirations. Wherever you fit in this great bicycling world, TOIRV has a route to suit YOU. Ron

WRAP-UP REPORT - 1981 PEDAL-IN: The May 17 Washington Square Pedal-In was one of the most successful IVW sponsored touring events to date. A total of 161 riders participated on a day of questionable weather conditions. (Frankly the turnout was surprising but welcome) A break-down of numbers of riders on each of the routes looks like this:

100 mile route - 51 riders
. 50 mile route - 52 riders
25 mile route - 46 riders
10 mile route - 12 riders

Though we had no intent to make a large profit on this event, we'll end up with about a \$215 profit this year (compared to about \$75 last year). Its due to the much larger attendance. Our reasonable registration fees were not increased from last year.

Thanks to the following members for their help:

Registration - Jim Roeckeman Food Chairman - Pam Anderson
Food Stop Helpers - Steve Meisner, Bill and Ruth Perry, Dan Beckler, Irene Kerwin, Colleen Byrnes, Imelda Schulte, and Dave Diebel.
Registration Form Layout - Dave Gardner Registration Form Distribution R. Myers
Original Route Selection - Don Eberle Route Marking - Dave Wenzel, Rich Miller and Ken Beckler
Publicity - Mark Siegal Printing Assistance - Jack Fought
Parking - Andy Siegrist

Thank you to all of those who donated sandwichs or cookies. The variety obtained in this way really made the food stops special.

Thanks also to Hopewell township for use of their town hall yard for food stop, Roanoke Park custodian Jim Curtis for unlocking the restrooms early Sunday morning, and to Maxine Dingleline of Witzigs Shoe Store in Washington

Wrap-Up Report Continue

for her permission to use the store's front awning.

As a final note, Pedal-In Patches are ordered and are due in 6 to 8 weeks. (thanks to the Washington Square Merchants for patch design assistance)

It's time for a new route and new chairmen next year. Any ideas or volunteers?
Ron and Les, Co-chairmen

RIDE SCHEDULE:

- June 19-21 Steamboat Days TOIRV Geisert Hall on Bradley Campus from 6:00 a.m.
Saturday - 5 different routes 20 to 100 miles, 3 routes with options on
Sunday 20 to 110 miles. \$11 single, \$20 family includes T-shirt, custom patch, maps, sag, and entrance to Wildlife Prairie Park on Sat.
Sun, June 28 7:00 a.m. Pioneer Bank to Brimfield, 40 mile R.T. with some hills
Sun. July 5 8:00 a.m. Peoria Court House to Morton 35 miles R.T. moderate
Sat July 11 Colonel Sanders Memorial Tour, see registration forms.
Sun. July 12 8:00 a.m. Pekin Insurance Building to Machinaw 40 miles R.T.
Sun. July 18 6:00 a.m. Pekin, Tazewell County Court House to Havana
100 miles R.T. difficult info call Ron 688-2488
Sun. July 18 8:00 a.m. Cherry Tree Shopping Center, Wash to Eureka 30 miles easy
Sun. July 25 7:00 a.m. Morton, Field Shopping Center to Normal 60 miles difficult

RIDERS CHOICE

- Washington - every Saturday 8:30 a.m. at the Square
every Wednesday 6:30 p.m. at the Square
Contact Les Siegrist or Ron Anderson
Peoria - every Saturday 8:30 a.m. at Columbus Statue, Parkside Drive in Bradley Park
Every Tuesday - Tourist Time Trails - 10 miles, 6:30 p.m. Cat Tech. Center
Every Thursday - IVW-VRT Training rides. Contact race team member for schedule

OUT-OF-TOWN RIDES

Rod Myers has offered to help co-ordinate out of town rides. If you plan on going to any and want to share gas expenses, if you need a ride, or if you just want more information, just give Rod a call at 692-2975.

UPCOMING EVENTS

August 1 & 2 TO ALL WOMEN - A group of women from Peoria and environs are planning to go to the Amishland - Lakes ride in Howe, Indiana on August 1 & 2. If you are interested in joining us for the weekend, carpooling, or just learning more, please contact Diane Ziegler, 688-8993 or Joanne Fought, 676-6849

August 16 IVW Annual Metric

August 22 & 23 Campout and ride from Pere Marquette State Park. Highlights include peach harvest, Mississippi and Illinois River ferries, winery
For more info call Ron 688-2488

Sept 6 Annual Chicken Ride

Sept 5, 6, 7 Ride to and campout at Nauvoo State Park. Festival of Grapes
For more info call Ron 688-2488

October 10 & 11 Hilly 100 Let's go for the Club Trophy this year.

For info call Rod 692-2975

In addition to the above rider's choice rides, several other IVW members ride frequently in the evening. They usually meet at Mr. Donut along Sterling Ave enabling a quick exit from the city. The rides are usually about 10 - 15 miles at a slow pace. For more info call Ron Douglas 674-3454, Bob Jones 676-0166.

"Newsletter Thanks"

We thank all who contributed to the newsletter this month. Jay Manthey for the racing news; Elaine Roth for the Gear-Down report; Ron Anderson for the Pedal-in wrap-out and for the other persons who helped. If you have any material for the newsletter, send it direct to Steve Meisner, 5919 Tampico, Peoria, IL 61614.

GEAR-DOWN 81

My bike bag filled with diapers and bottles, and nine-month old Michael strapped into his seat on the back of Rick's bike, we headed out for a short ride in the countryside around Middle Tennessee State University in Murfreesboro Tenn. Our longest ride this year had been ten miles at the IVW Pedal-In and Michael was not very happy, so we didn't know what it would be like taking him to GEAR-DOWN. With his seat angled back to keep his sleepy head from flopping around, he rode real well and we spent a lot of time on the bikes riding with our old friends from the Stark County Bicycle Club. Michael got a lot of attention in his helmet and IVW T-shirt.

We biked on excellent roads through beautiful Tennessee countryside and stopped at quaint old towns, a civil war battlefield, and visited a Tennessee walking horse farm. The area can't be beat for friendly people and patient drivers. The meals were excellent and we never had to wait in line.

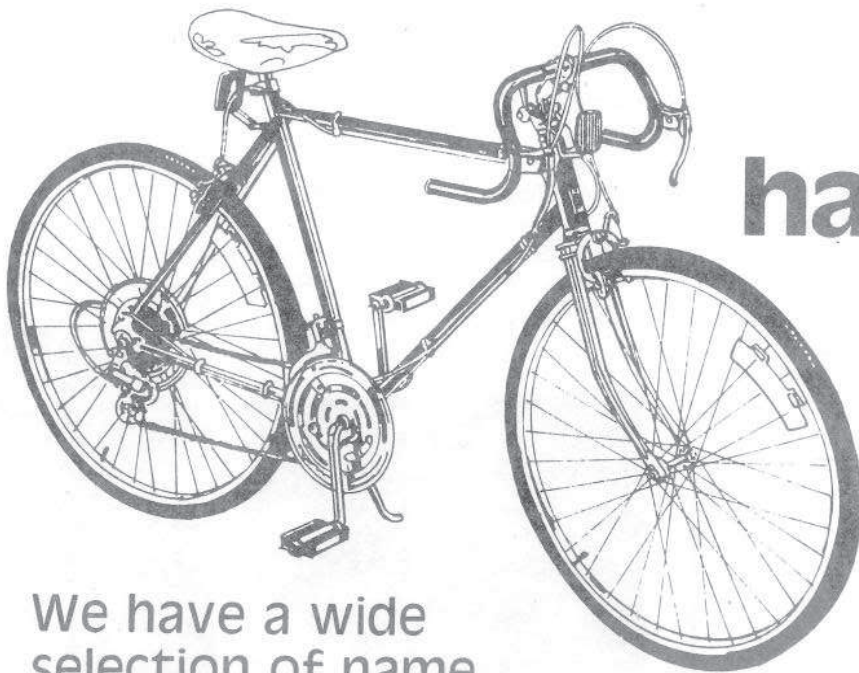
There were workshops on many subjects, and Rick attended one on tandem cycling. Entertainment included an excellent bluegrass band with western dancers, a slide show of an around-the-world bike tour, and movies. The Post-GEAR event was a day at Opryland USA where we enjoyed lots of musical shows and amusement park riders. The beautiful grounds at the park are worth the visit. Elaine Roth

ON THE ROAD BY THE BLUE STREAK

I hope you've gotten a little from this column the last few months. Most of the material comes from articles in Bicycling, American Wheelmen, or Effective Cycling. If you want more detailed information, I suggest reading the above and practicing more on your bicycle to develop your skills.

When riding in a group, 'car up', or 'car down(back)' is often called out. 'Car up' means vehicles are approaching from ahead. Be especially wary when there is more than one car. Often the second or third car will pull out to Pass and if they don't see you, head for the ditch. 'Car down(back)' means vehicles are about to overtake the group. Single up and maintain the same pace.

BROWN'S SPORTING GOODS



**Brown's
has bicycles
for the
entire
family!**

We have a wide
selection of name
brand bicycles at prices
you can afford!

Brown's
SPORTING GOODS

PEORIA BICYCLE SUPPLY for all your cycling needs.

Cycling shorts velour crotch	2324 N. Atlantic reg \$16.98	• Peoria, Illinois 61603 sale \$14.28
Cycling gloves	12.50	9.52pr
Alloy Kickstand	4.25	3.81e
Wobler Special Course tubular	19.95	16.19e
Blackburn alloy H ₂ O bottle cage	9.75	7.14e
derailleur or brake inner wires	1.15e	1.43pr.

Burlington IA May 23 It rained on only one event today, and Brett simply got soaked. The sun came out for the other races and Steve Meisner took ninth place in the veterans category. Jay & Ken did not place in the Sr. 3's.

Muscatine IA May 24 This Sunday was not kind to the IVW Velo Racing Team. We failed in every competition to place in the money. Brett Rickett chased the pack for the entire race, caught with only one lap to go, was sitting in good position, and then flatted, rolled a tire, and crashed in a corner.

Moline, IL May 25 Dave Kemmerer and Brett couldn't quite hang on to the pace with the other Juniors, Steve Meisner had the same problems with the veterans. Ken Beckler and Jay Manthey were riding well when a crash separated them, Jay went on to finish fourth.

Ripon, WI May 28 Ken and Jay find out more about hills. Jay Managed to hang in there for 16th place.

Oshkosh, WI May 29 Jay crashed and chased then finally packs it in for the day. Ken finished out of the money.

Appleton, WI May 30 Ken feels the effects of the racing of the past week and retires early. Jay is too far back in the pack for a place on the last lap.

Kenosha, WI May 31 Both Ken and Jay attempt to break away today, but the field is too alert to let anything like that happen. After 50 miles, Ken and Jay finish in a pack sprint, NOT good enough for a banana.

- June 6-Covington, KY
- 7-Lexington, KY
- 13-State championships
- 14- " "
- 27-Leroy, IL
- 28- Evansville, IN



"BICYCLE SPOKEN HERE!"
 EXPERT 10 SPEED REPAIR
THE BICYCLE CENTRE
698-7004
 109 SOUTH MAIN STREET
 CREVE COEUR, IL.



Sekai

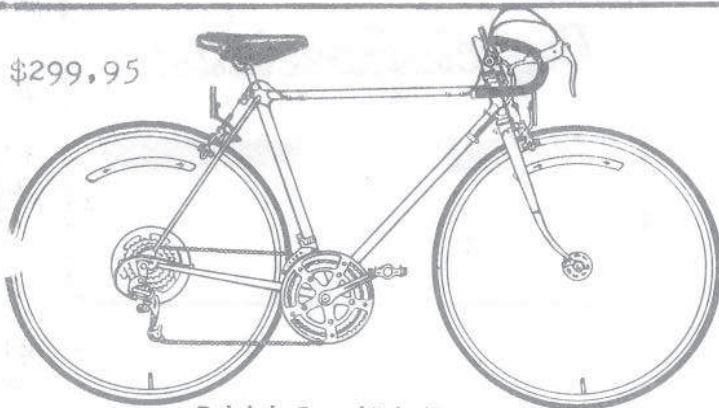
NEW MEMBERS: We wish to welcome the following new members to the IVW:
 Marvin, Hildred & Terry Harms
 John W. Whisler
 Tom Seckler

HIGHLIGHTS OF THE HISTORY OF BICYCLES: The First National Bank of Pekin has on display the history of the bicycle in this country. The exhibit shows that interest in bicycles has existed for over 100 years, and that the bicycle deserves more credit than it has received in the past for revolutionizing transportation in the United States. The display will remain on view through June 26, and will then continue its travels throughout the United States and Canada.

THE 1981 PEDAL IN WAS COOL BUT SUCCESSFUL THANKS TO A FEW OF THE PERSONS IN THESE PHOTOS



\$299.95

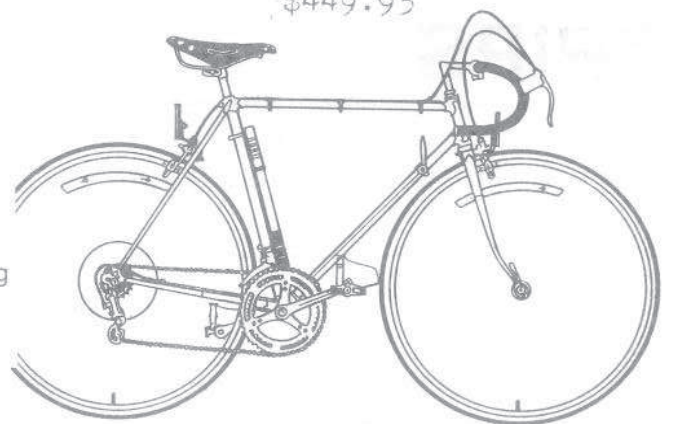


Raleigh Grand Prix (Drop Bar)

One of our most popular models. An excellent recreational 10-speed with outstanding appearance. The Grand Prix gives you top-of-the-line styling and lightweight maneuverability, at a popular price. Equipped with light alloy equipment and comfortable, soft padded saddle.

Lightweight Blue Bronze Pearl Silver

\$449.95



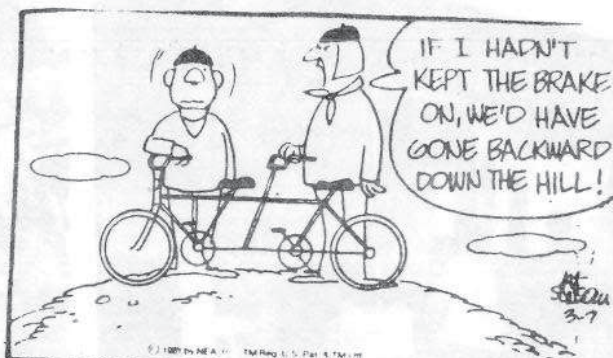
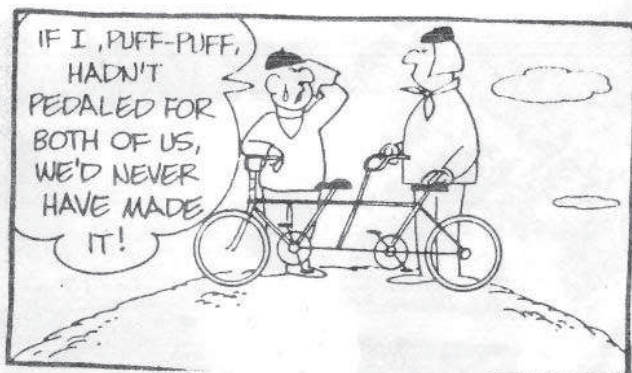
Raleigh Competition GS (Drop Bar)

Built of lightweight 531 double butted tubing throughout, with chrome front and rear fork ends, and equipped with the Campagnolo Gran Sport ensemble with sewup tires

ILLINOIS
Cycle
 4660 N. WAR MEMORIAL AT GLEN
 281 DERBY ST. - PEKIN

FROM OUR SECRETARY: Included with this newsletter is a revised and updated membership list and a membership card. It was decided to send these out after the cutoff date for payment of dues. All new members should now have a patch, a constitution, the membership list and a membership card. If you do not have them, please let me know and I will be glad to provide them. Someone may have been missed in the transition of officers. If I left anyone off the membership list, please also let me know, contrary to most people, I do make mistakes. Joanne Fought 676-6849

MORE ON THE NAME CHANGE: If you have any suggestions for an appropriate name change, please contact one of the officers. It is of concern to enough members that a vote will probably be taken at the annual meeting in November. Whatever your feelings are toward a change - positive or negative - please let them be known rather than complaining or being supportive only in private.



TRIPS bicycle shop.



- FUJI
- RALEIGH
- ROSS

TRIPS 340 EAST MAIN
GALESBURG, ILLINOIS 61401

Roger E Wise
Bicycle Specialist

674-7502

PROFESSIONAL REPAIR &
TECHNICAL ASSISTANCE

ILLINOIS VALLEY WHEELMEN 1981 APPLICATION FOR MEMBERSHIP

Name _____ Phone _____ New _____

Address _____ City/zip _____ Renewal _____

Bicycling Interests: Short, slow-pace _____ Saturday rides _____ Sunday rides _____
Local rides _____ X-Country Tours _____ Racing _____

Mail application and dues to: Illinois Valley Wheelmen Individual \$6.00
P.O. Box 1523 Family \$8.00
Peoria, Illinois 61655

Staffing expertise plus full utilization of computer facilities for personalized, accurate and rapid administration and processing of all lines of insurance.

- **Property and Casualty Insurance**
—Personal and Business
- **Group Insurance**
—Employee Benefits and Professional Associations



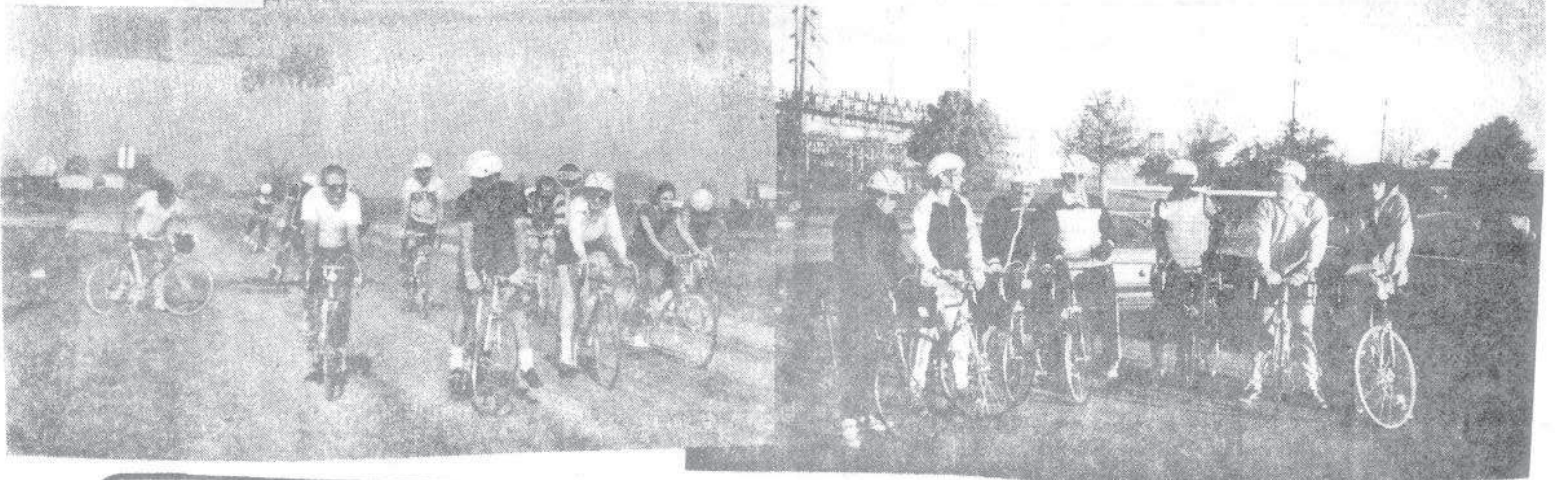
John P. Pearl & Associates, Ltd.
INSURANCE

PROSPECT AT GLEN • PEORIA, ILLINOIS 61614 • 309/688-9000

BRANCHES:

ATLANTA, GEORGIA — INDIANAPOLIS, INDIANA — PORTLAND, OREGON — ROANOKE, VIRGINIA
LONDON, ENGLAND

WHERE WERE THESE PHOTOS TAKEN?



PEORIA BIKE SHOP

NEW BIKES • REPAIRS • PARTS

DISCOUNT ON SPECIAL ORDERS S & S
PERFORMANCE BMX CRUSERS ZEBRA KENKO
MULTISPEEDS

809 E. WAR MEMORIAL DR.
PEORIA, IL 61614
PH.: (309) 688-1915

MIKE SCHROER

Cycles Du Monde, Ltd.

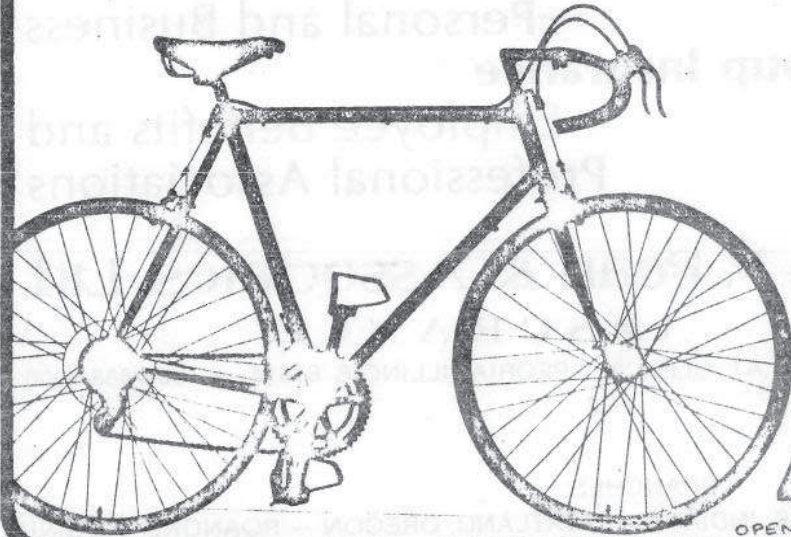
SALES & SERVICE OF ALL MAKES
RALEIGH & SEKAI

FIELD SHOPPING CENTER
MORTON, ILLINOIS 61550

VITESSE

Cycle Shop

College & Linden
Normal Illinois



BICYCLES BY
RALEIGH
SEKAI
FUJI
TREK
MOTUBECANE

FRAMESETS BY
TREK
ROBERTS
VINER
CUSTOM FRAMESETS BY
MCLEAN
CUSTOM BRAZING
TOURING EQUIPMENT BY
BLACKBURN
ECLIPSE
KIRTLAND

Telephone

454-1541

OPEN MON-FRI 12-8 SAT 9-5



ADAMS FURNITURE

YOUR ETHAN ALLEN GALLERY

619 W. LAKE

PEORIA

PH. 686-3554

BEACHLER'S SERVICENTER & CAR WASH

3623 N. UNIVERSITY
PEORIA, ILL.

PH 688-2488



For Runners,
By Runners

OPEN
Mon-Sat 10-6

700 West Main
(Main & Sheridan)
Peoria, IL 61606
309 676 6178

JACK WELCH
ALL STYLES
ALL MAKES



(309) 387-6282

PARTS
SERVICE

PARKVIEW CT., NORTHERN OAKS R.R. #1, PEKIN, IL 61554

JACK'S BICYCLE REPAIR

ILLINOIS VALLEY WHEELMEN
BOX 1523
PEORIA, ILLINOIS 61601