

July 86

ILLINOIS VALLEY WHEELMEN



PRESIDENT'S NOTES ---

Really, I did write a zinger of a column for this month, but I just couldn't see my way clear to publishing it. Those of you who enjoy my occasional outbursts against an automobile plagued society would have prized it. I believe any organization likes to think from time to time that its ceremonial leader is a couple of degrees off plumb; but I recovered and yet retain some of my chain-greased dignity to endanger upon another occasion.

1600 miles on the log this year. Although out of shape (disclaimer before statement), I have enjoyed riding more than ever. I believe the main reason is my abandonment of New Year's resolutions quickly. Next double century I won't be riding to prove my prowess, I'll be riding to provide room for the pizza.

I hope that yall are keeping track of the various upcoming rides. For those who have always wanted a Sunday ride, not in the morning, please note Dave Glackin's Sunday evening casual rides. Pace is similar to Ron Johnson's Tuesday evening rides and starts at Commercial National Bank on Pioneer Parkway.

There is no July meeting and new this year--no July picnic. Instead the picnic will be held after Diane's Ride (previously the Summer Metric - set for August 17 at Lake Camelot). I hope to see a lot of IVW cyclists at this event.

A couple of things to keep in mind: The club rides double file as long as it doesn't impede car traffic; in traffic and city riding single file about two feet off the white line is a general rule. As long as people insist on driving cars we'll need to share the road with them. And (hate to bother the rest of you with this) please ride to the right side of the lane. I believe if I were driving an oncoming car center-lane cyclists would make me a tad nervous. I'll end this bit of preachment by mentioning the IVW has more good, safe riders than ever and the helmet count is looking good as well.

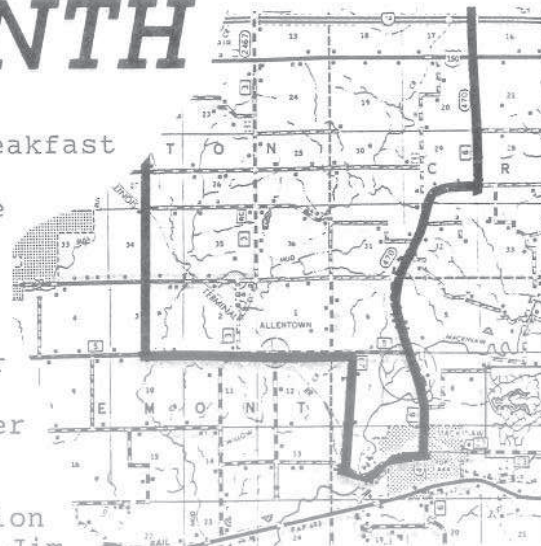
Coming at the September meeting -- Phyllis Harmon from Wheeling, Il. to speak about the League of American Wheelmen and to what that august body is up to now.

I have spoken with several people who have missed vital information in past newsletters. Here is a test of your visual acuity and cognitive prowess--Can you find the crude and appalling expletive in this newsletter?

see you on the road--Samuel

RIDE OF THE MONTH

The ride of the month for July is the near famous Morton to Normal and back for Breakfast Ride. Leaders of the ride are Bob Jones and Sam Joslin. The 80 mile ride leaves from the Field Shopping Center in Morton at 7:30 a.m. heading for the Falcon restaurant in Normal. CAUTION -- this ride is not for the faint of leg or heart -- there is no sag wagon and a marked route is also up in the air. In other words, if you wonder whether you're up for the ride, consider discretion to be the better part of valor and regale yourself with one of the many other fine rides the IVW has to offer. Should you choose to accept this mission the date of the ride is July 6th. Good Luck, Jim.



TIME TRIAL RESULTS

| | MAY 24 | MAY 31 | JUNE 7 |
|----------------|---------|--------|--------|
| | 55° | 70° | 70° |
| | NE wind | E wind | Calm |
| JIM CLARK | 36:07 | | 34:01 |
| JACK GEISE | 28:48 | | |
| RON LOVE | 27:10 | | |
| STEVE VODICHEK | 29:04 | | |
| MAX EVANCIK | 30:07 | | 29:27 |
| DON CHARLSTON | 26:32 | | |
| ERIC KUMPF | 25:28 | 24:29 | 24:16 |
| PAT CLARK | 26:23 | | 25:40 |
| ERIC CARLSON | 24:56 | | |
| DOUG BALVANZ | 27:07 | | |
| DARYL JOHNSON | 23:51 | | |
| DEBBIE KUMPF | | 34:37 | 33:29 |
| DON McCULLUM | 27:27 | 27:27 | |
| ART BRECHER | 28:15 | 28:15 | |
| JACK TUCKER | | 30:41 | 29:40 |
| DAVE WIRSCHING | | 28:55 | 28:45 |
| MARTY HAMM | | 27:34 | 26:43 |
| KEN BECKLER | | 26:41 | |
| JACK BREJC | | | 27:23 |
| LES MORRIS | | | 28:46 |
| JIM SMITH | | | 26:02 |
| MO KELLY | | | 29:18 |
| RICH HILBOS | | | 26:34 |



ATTENTION CAPTAIN AHAB - THE W.H.A.L.E. IS ABOUT TO RETURN!!!

Yes, W.H.A.L.E. (WHeeling Around Lake Evergreen) is just around the corner. The ride winds its way to Lake Evergreen where there will be an evening of camping (and a steak fry and corn boil). Sunday morning we travel to Bloomington for breakfast and then return home. All for a very reasonable price; more details will follow in the next newsletter. Plan to participate Aug. 2-3 and make our W.H.A.L.E. more famous than Shamu or Moby Dick.

Also in August is Diane's Ride (formerly the Summer Metric). August 17th has been set aside for fun, sun (and of course -hills). A picnic will follow afterwards at Lake Camelot.

Last year there were 150 riders on the ride; many from out of town. This year we will offer hospitality houses to our out of town friends. If you would like to offer a house (room, space on the floor or grassy spot in the back yard) contact Mo Kelly (691-4010).

R.A.T.O.R. * * *

What is it? It's the 4th of July ride. Ride begins at 10:30 a.m. After the 20 mile ride on marked roads to I.C.C and back, enjoy the free cookout courtesy of the I.V.W. Swimming will be available for those so inclined. Food donations on the order of fruit, cookies or brownies are welcome; and be sure to bring a blanket or lawnchair. Ride begins and ends at Rosanne & Ted Gambogi's in Morton. To ask for directions or to R.S.V.P. (and you must tell Rosanne you're coming before July 1) just call Rosanne. The number is 266-6816. Good time to be had by all. * * *



Ride Schedule

JULY 1986

| SUNDAY | MON. | TUES. | WED. | THURS | FRI | SAT |
|--|------|--|---|-------|--------------------------------------|--|
| | | 1 Casual Ride Pio.Park 6:15 PM Ron 682-8777 | 2 WSR- Wash.-6:15 PM Pekin-6 PM Peo.-6 PM Chris D(699-4005) | 3 | 4 RATOR see note 10:30AM | 5 Time Trial (TT) Mossville;7 AM Show & Go (S&G) Wash.Sq.;8:30AM |
| 6 MORTON TO BLOOMINGTON* | 7 | 8 Casual Ride Pio.Park 6:15 PM Ron 682-8773 | 9 WSR- Wash.-6:15 PM Pekin-6 PM Peo.-6 PM Steve M(692-9724) | 10 | 11 | 12 TT-Mossville 7 AM Wash.Sq. S&G 8:30 AM |
| 13 Lake of the Woods Plaza to Brimf'ld for Breakfast;35-40mi;7:30AM Jim H 243-9313 Casual Ride-CNB;6PM Dave G 682-8777 | 14 | 15 Casual Ride Pio.Park 6:15 PM Ron 682-8777 | 16 WSR- Wash.-6:15 PM Pekin-6 PM Peo.-6 PM Rolla G (243-5691) | 17 | 18 | 19 TT-Mossville 7 AM S&G-Wash.Sq. 8:30 AM |
| 20 Wash.Sq. to Roanoke for Breakfast;35-40 mi;7:30Am Steve V 673-0182 | 21 | 22 Casual Ride Pio Park 6:15 PM Ron 682-8777 | 23 WSR- Wash.-6:15 PM Pekin -6 PM Peo.-6 PM Marty T (685-4571) | 24 | 25 | 26 TT -Mossville 7 AM S&G-Wash.Sq. 8:30 AM |
| 27 Kroger(on Sterling) to Elmwood;40 mi.;7:30AM (for breakfast) Sam J 682-8777 Casual Ride-CNB;6PM Dave G 682-8777 | 28 | 29 Casual Ride Pio.Park 6:15 PM Ron 682-8777 | 30 WSK- Wash 6:15 Pekin-6 PM Peo.-6 PM Bev R (685-4911) | 31 | | |

* RIDE OF THE MONTH

Future rides;
Aug. 2-3 W.H.A.L.E. -see note
Aug 17 Diane's Ride (Summer Metric)

See reverse side for ride description

The IVW doesn't limit itself to riding together just once a week. The club offers a variety of rides throughout the week...Come on out and join the FUN!

TUESDAY

TUESDAY NIGHT CASUAL RIDES(for beginners and those wishing an easy pace)leave from the Commercial National Bank parking lot on the corner of University and Pioneer Park Drive.Ride leaves at 6:15,covering a leisurely 10-20 miles.Everyone is welcome.For more information call 682-8777 and ask for Ron.

WEDNESDAY

WSR (WEDNESDAY SOCIAL RIDES)

WSRs begin from Washington Square,Commercial National Bank (CNB) at University and Pioneer Parkway,and from the Eagle store in Pekin.The Pekin and Peoria rides begin at 6:00 PM and the Washington ride begins at 6:15 PM.Distances range from 12-25 mi.-depending on weather conditions and the amount of daylight.

Gary Sams (346-2008) leads the Pekin ride.Those interested in the Washington Ride should contact Ron Anderson(444-2018).The Avanti's ride has various leaders.(leaders names will appear on the ride schedule.

After the Peoria ride,quite a few of us go inside to Avanti's to talk,eat,etc.Even if you can't make the ride,you are always welcome to meet us afterwards.

SATURDAY

TIME TRIALS are held each Saturday morning in Mossville on Old Galena Rd at the Caterpillar Tech Center.Test yourself on the ten mile course.Riders start at 7:00 AM,so get there early to warm up and be prepared to start at 7.HELMETS REQUIRED.

SHOW & GO (S&G)-from Washington Square,every Saturday;8:30 AM Breakfast Ride-varies from 20-30 miles.Those who show(s) - go (g)

SUNDAY

Sunday rides begin from all over the area and usually start in the morning.They vary in distance and always have a leader. Questions relating to a specific ride,such as the terrain or riding pace,can be answered by the ride leader(whose phone number is listed).

SOMETHING NEW FOR SUNDAYS Dave Glackin will be leading a 15-20 mile casual ride on several Sunday EVENINGS.The ride begins at 6:00 PM from the Comm.Nat'l Bank parking lot.The dates for the rides are June 15 & 19 and July 13 & 27. for more info call Dave 682-8777.

If you don't see rides you like,please call the ride chairman, Gregg Benning and volunteer to lead the ride of your choice(your pace,your distance,your route).

Consult ride schedule for leader.

FROM THE MAILBOX ---

From the Spoken Word, the newsletter of the Arlington Heights Bicycle Association, there is now a bicycle advisory commission in Arlington Heights. Current project is to work with the village and Rolling Meadows on an extension of an existing bicycle route. This advisory commission apparently will speak for improved cycling conditions in their area and report to the village of Arlington Heights. The seven candidates were formally sworn in by the Mayor on March 27.

From Spoke Signals, newsletter for the Blackhawk Bicycle Club, of Rockford, Il. The club has recieved complaints of road congestion via the Boone County Sheriff, caused by its popular Wednesday night ride. The club is now breaking the group into smaller segments with fastest riders first. A great deal of responsibility devolves on each rider to contribute to a safe ride. This is something we need to pay attention to often.

George Burrier, from the Friends of the Rock Island Trail, has sent a list of hikes on the trail to the club. To see what the trail really looks like, you may want to attend these hikes on July 13 and August 10 at 1 p.m. More information is available from Sam. 682-8777.

OUT OF TOWN RIDES ---

There are lots of them. Look at last month's listing and add rides in Indiana-Michigan, Amishland and Lakes, Middleton Wisconsin and many others. You know the nuym (Number) for information --682-8777. Got to cut it short this month, the typewriter is acting up...

FOR SALE ---

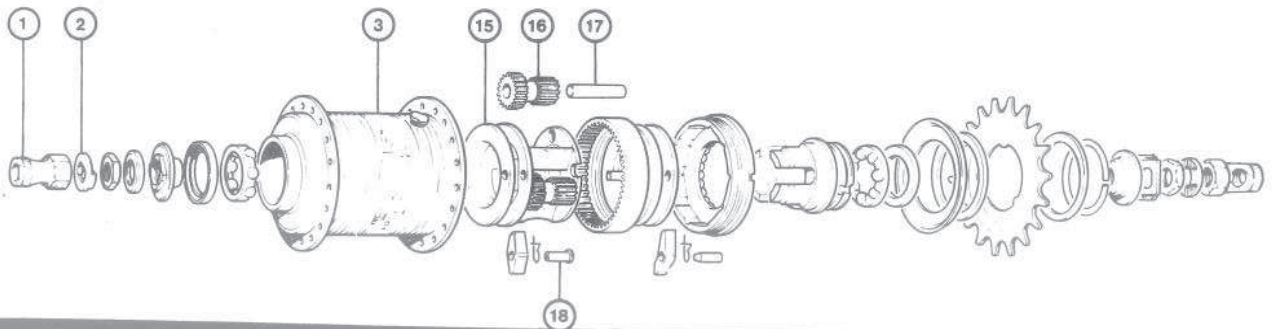
Dave Glackin's old 24½ Trek, T.A. triple and other goodies (where'd that note go?) \$250 Call Dave at 682-8777. A Heck of a Deal...

Contribute to the Tricycle for Sam Fund. Good Stuff at sacrifice. 2 pairs of 700c clincher rims mounted on Campy (Nuovo) hubs. Each pair \$40! One Tunturi Rower -- Quite the Deal! Only \$60 to make your arms hurt like anything. Call Sam at 682-8777. Sam might even part with Campy track crank and hub laced to clincher rim...



On the program for the June 26 IVW meeting... PEDAL AROUND PEORIA TOWN --- PEDAL IN '86. Come to see slides of Peoria county's best roads, scenery, and cyclists. It all happens at 7:30 p.m. at Safetytown -- 6518 N. Sheridan. As always, refreshments provided by Miss Beck.

Pedal-In '86



1986 IVW MEMBERSHIP

DATE

NAME(S) OF APPLICANT(S)

NEW/RENEW

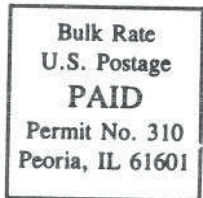
STREET ADDRESS

CITY

STATE ZIP

PHONE NUMBER

DUES:\$10 individual,\$12 family;Mail to: Illinois Valley Wheelmen
6518 N. Sheridan Rd.,Peoria,IL 61614



Ron Anderson Family
203 Locust
Washington, IL 61571